

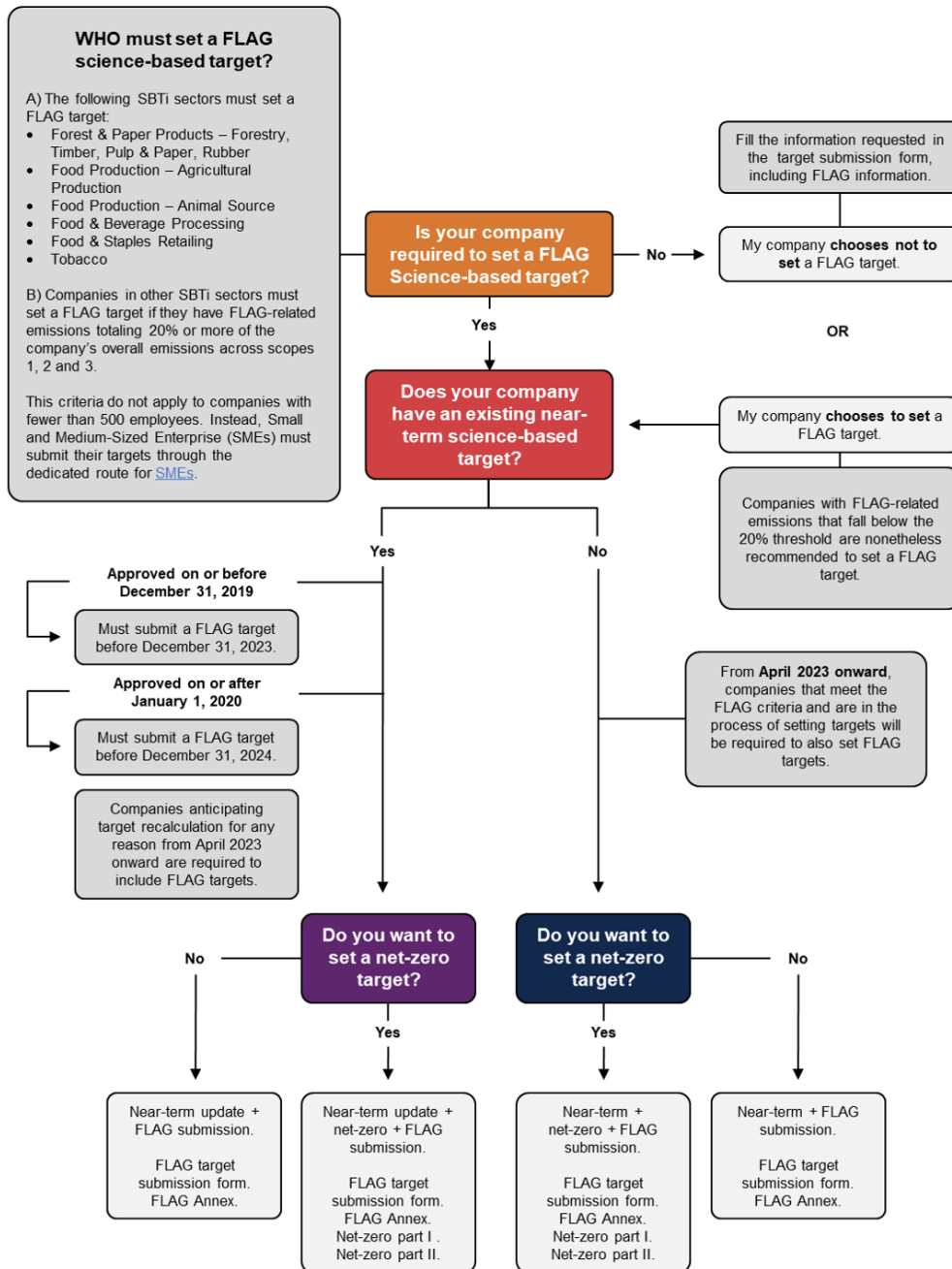
# GETTING STARTED GUIDE FOR THE SBTi FOREST, LAND AND AGRICULTURE GUIDANCE

Version 1.0

March 2023

# GETTING STARTED GUIDE FOR THE SBTi FOREST, LAND AND AGRICULTURE GUIDANCE

Use this diagram to determine the submission type your company needs to send to the Science Based Targets initiative (SBTi) to comply with the Forest, Land and Agriculture Target Setting Guidance requirements.



## TARGET VALIDATION COSTS, DOCUMENTS AND TOOLS TO SUBMIT

WHICH TARGETS ARE YOU SETTING?	PRICING INFORMATION	DOCUMENTS TO SUBMIT	TOOLS TO SUBMIT
Near-term target update + FLAG target	$\$4,750 + \$7,500 =$ $\$12,250$	<ul style="list-style-type: none"> <li><a href="#">Near-Term Target Update Submission Form</a></li> <li><a href="#">FLAG Annex</a></li> </ul>	<ul style="list-style-type: none"> <li><a href="#">SBTi Target-Setting Tool</a></li> <li><a href="#">SBTi FLAG Target-Setting Tool</a></li> </ul>
Near-term target update + Net-zero + FLAG targets	$\$12,750 + \$7,500 =$ $\$20,250$	<ul style="list-style-type: none"> <li><a href="#">Near-Term Target Update Submission Form</a></li> <li><a href="#">FLAG Annex</a></li> <li><a href="#">Net-Zero Submission Form Part I</a></li> <li><a href="#">Net-Zero Submission Form Part II</a></li> </ul>	<ul style="list-style-type: none"> <li><a href="#">SBTi Target-Setting Tool</a></li> <li><a href="#">SBTi FLAG Target-Setting Tool</a></li> <li><a href="#">SBTi Net-Zero Tool</a></li> </ul>
Near-term + FLAG targets	$\$9,500 + \$7,500 =$ $\$17,000$	<ul style="list-style-type: none"> <li><a href="#">Near-Term Target Submission Form</a></li> <li><a href="#">FLAG Annex</a></li> </ul>	<ul style="list-style-type: none"> <li><a href="#">SBTi Target-Setting Tool</a></li> <li><a href="#">SBTi FLAG Target-Setting Tool</a></li> </ul>
Near-term + Net-zero + FLAG targets	$\$14,500 + \$7,500 =$ $\$22,000$	<ul style="list-style-type: none"> <li><a href="#">Near-Term Target Submission Form</a></li> <li><a href="#">FLAG Annex</a></li> <li><a href="#">Net-Zero Submission Form Part I</a></li> <li><a href="#">Net-Zero Submission Form Part II</a></li> </ul>	<ul style="list-style-type: none"> <li><a href="#">SBTi Target-Setting Tool</a></li> <li><a href="#">SBTi FLAG Target-Setting Tool</a></li> <li><a href="#">SBTi Net-Zero Tool</a></li> </ul>

## RESOURCES

To support companies in their FLAG target-setting process, the SBTi has developed a series of resources that companies should carefully consult to ensure they have the latest information on recommendations and requirements.

- [Forest, Land and Agriculture Science Based Target Setting Guidance.](#)
- [SBTi FLAG Target-Setting Tool.](#)
- [SBTi FLAG Project FAQs.](#)
- [SBTi FLAG Methods Addendum.](#)
- [SBTi FLAG Public Consultation Summary and Q&As.](#)
- [SBTi FLAG Guidance launch webinar recording.](#)
- For GHG accounting questions applied to the land sector, please refer to the [Greenhouse Gas Protocol Land Sector and Removals Guidance](#), which the SBTi follows for all accounting practices.
- For resources on net-zero, please visit the [SBTi Net-Zero Standard page](#).